

The background of the top half of the image is a dark blue field with a faint, glowing network of interconnected nodes and lines, suggesting a digital or data environment.

WIRELESS

# Data Logger Monitoring System

# MadgeTech Wireless Monitoring System

The MadgeTech system accommodates a wide variety of industries and applications, and offers real-time, continuous monitoring, and configurable alarm notifications.

- Quick & Easy Setup
- Text & Email Notifications
- Free Lifetime Support
- Unlimited Scalability



# Table of Contents

## 1. Wireless Systems

- Components
- Overview
- Setup

## 2. Products

- Wireless Data Loggers
- Wireless Transceivers

## 3. MadgeTech Software

- MadgeTech 4 Data Logger Software
- MadgeTech Cloud Services



# Wireless System Components

## BUILDING YOUR DATA LOGGING SYSTEM



**DATA LOGGER**



**TRANSCEIVER**

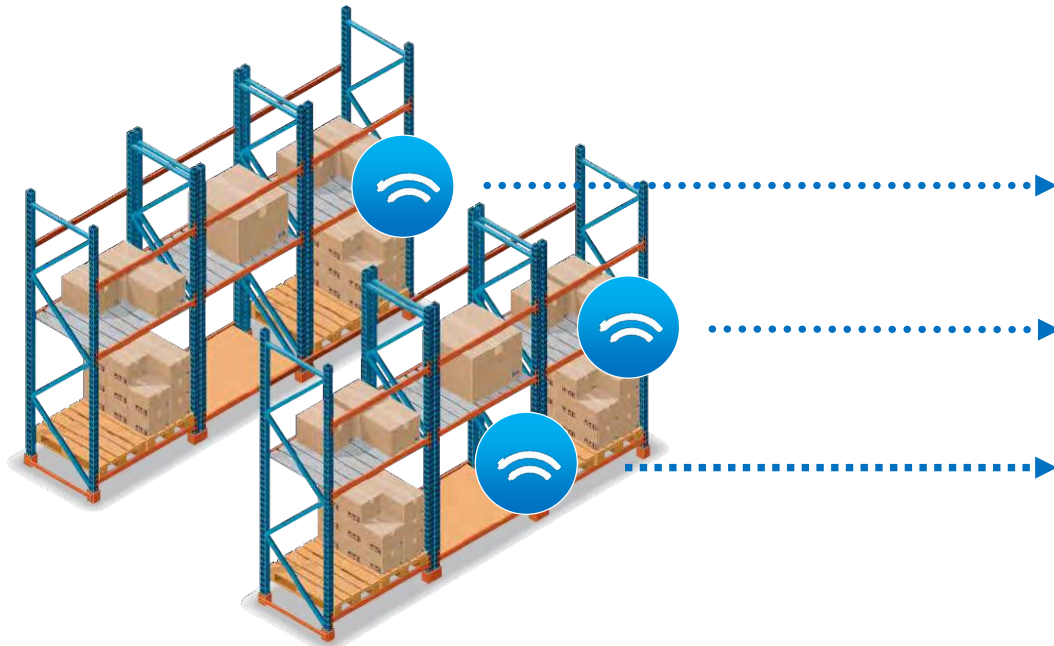


**SOFTWARE**



# Wireless Network Overview

DATA LOGGER COMMUNICATION THROUGHOUT YOUR FACILITY



**DATA LOGGERS**



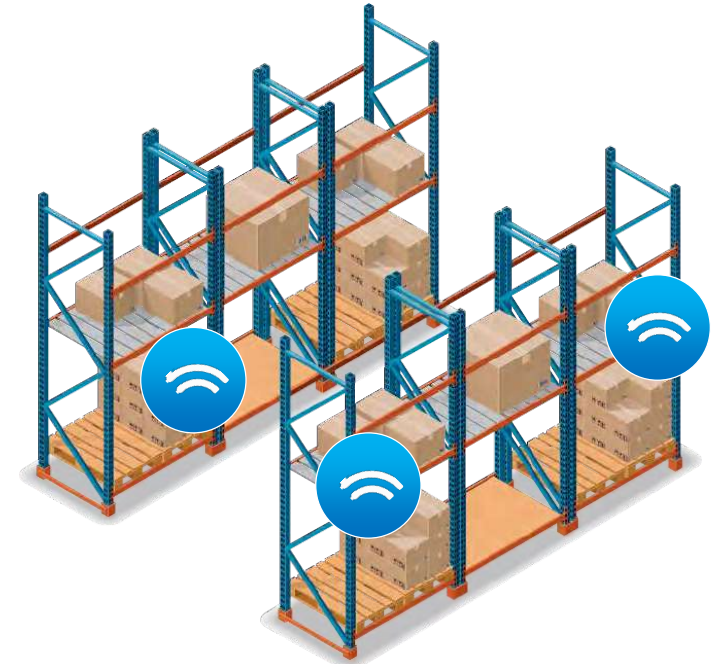
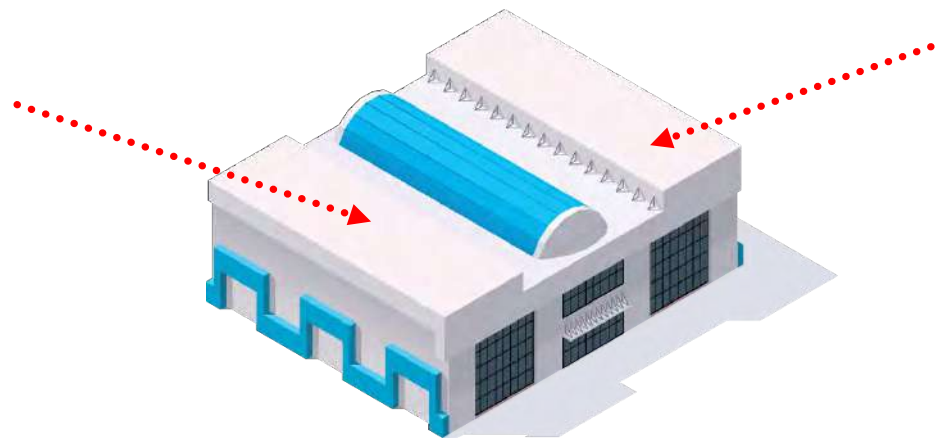
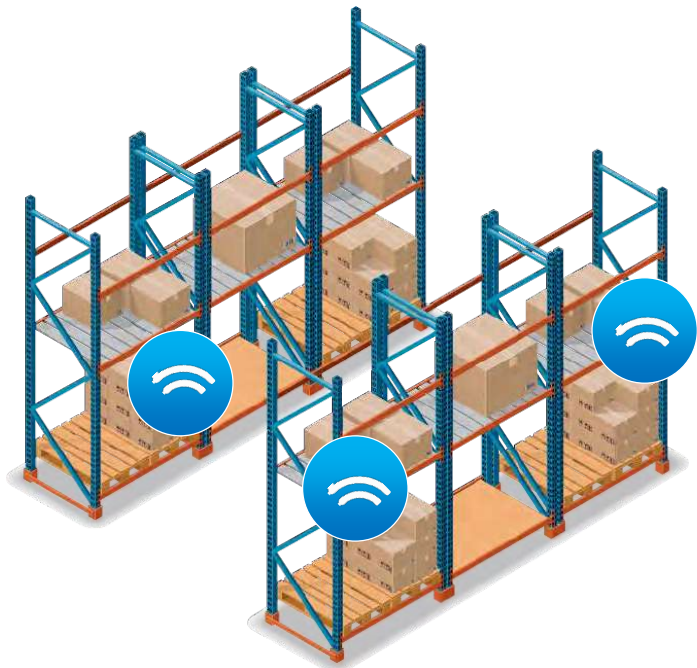
**TRANSCEIVERS**



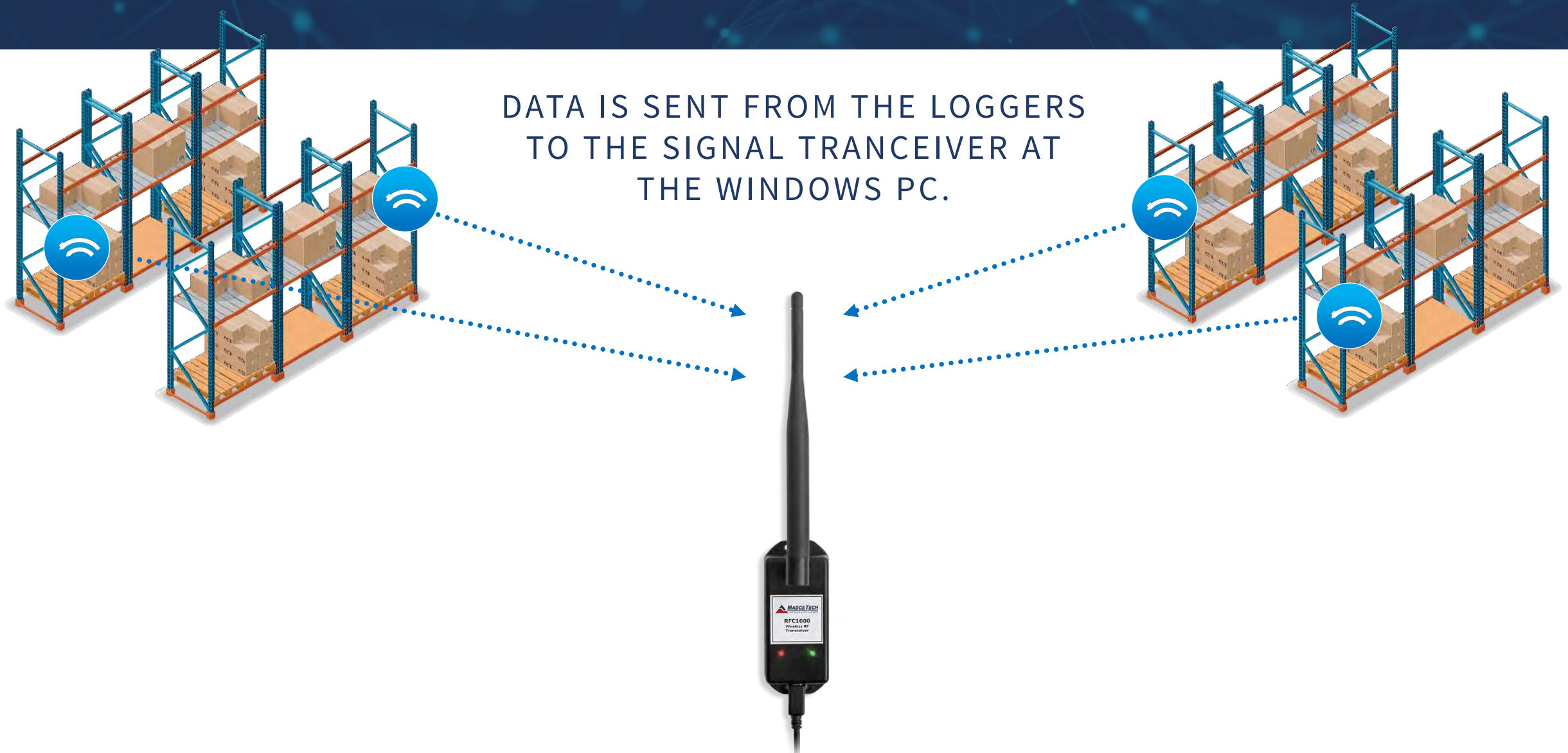
**SOFTWARE**

# Quick & Easy Wireless Setup

DATA LOGGERS ARE DEPLOYED  
THROUGHOUT THE FACILITY.

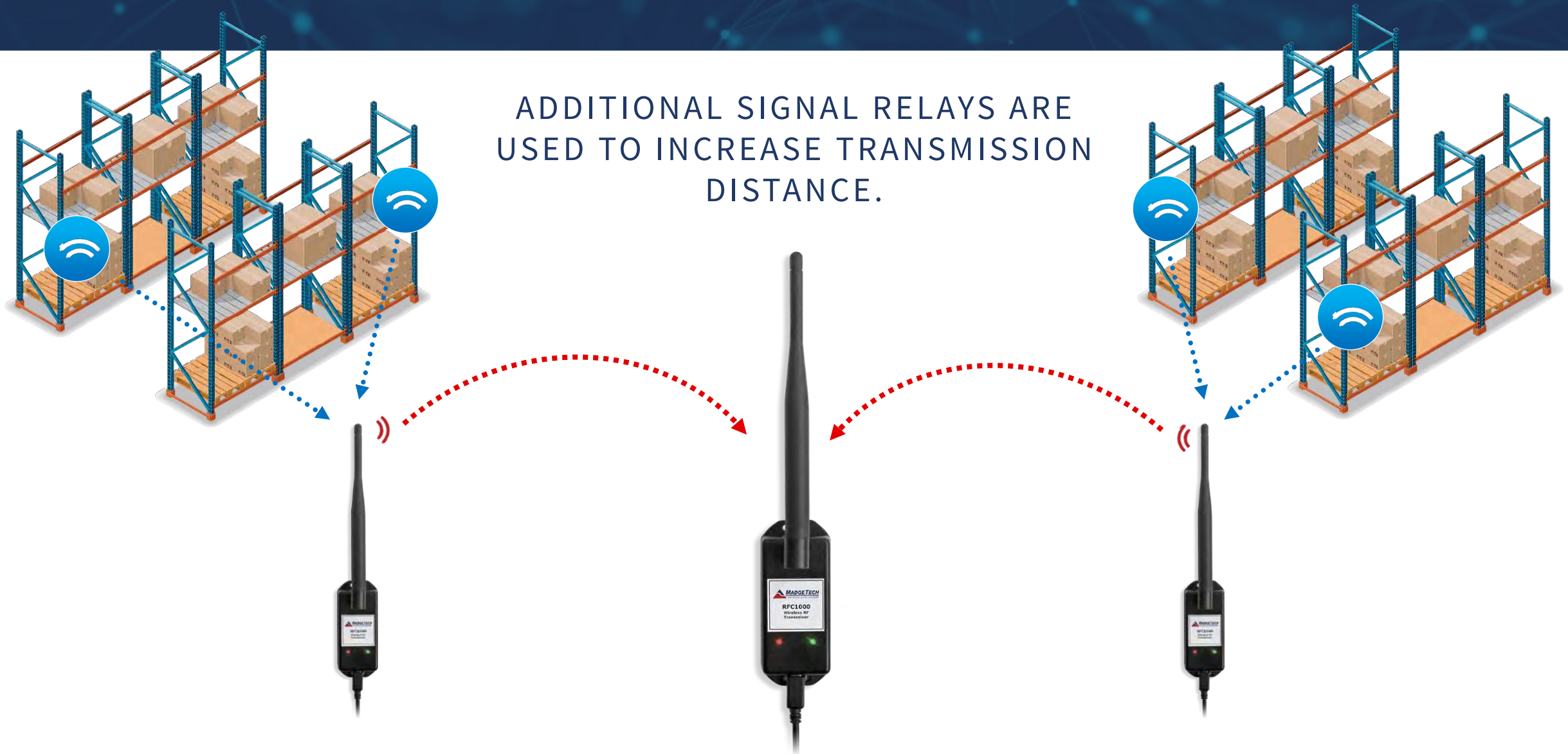


# Quick & Easy Wireless Setup



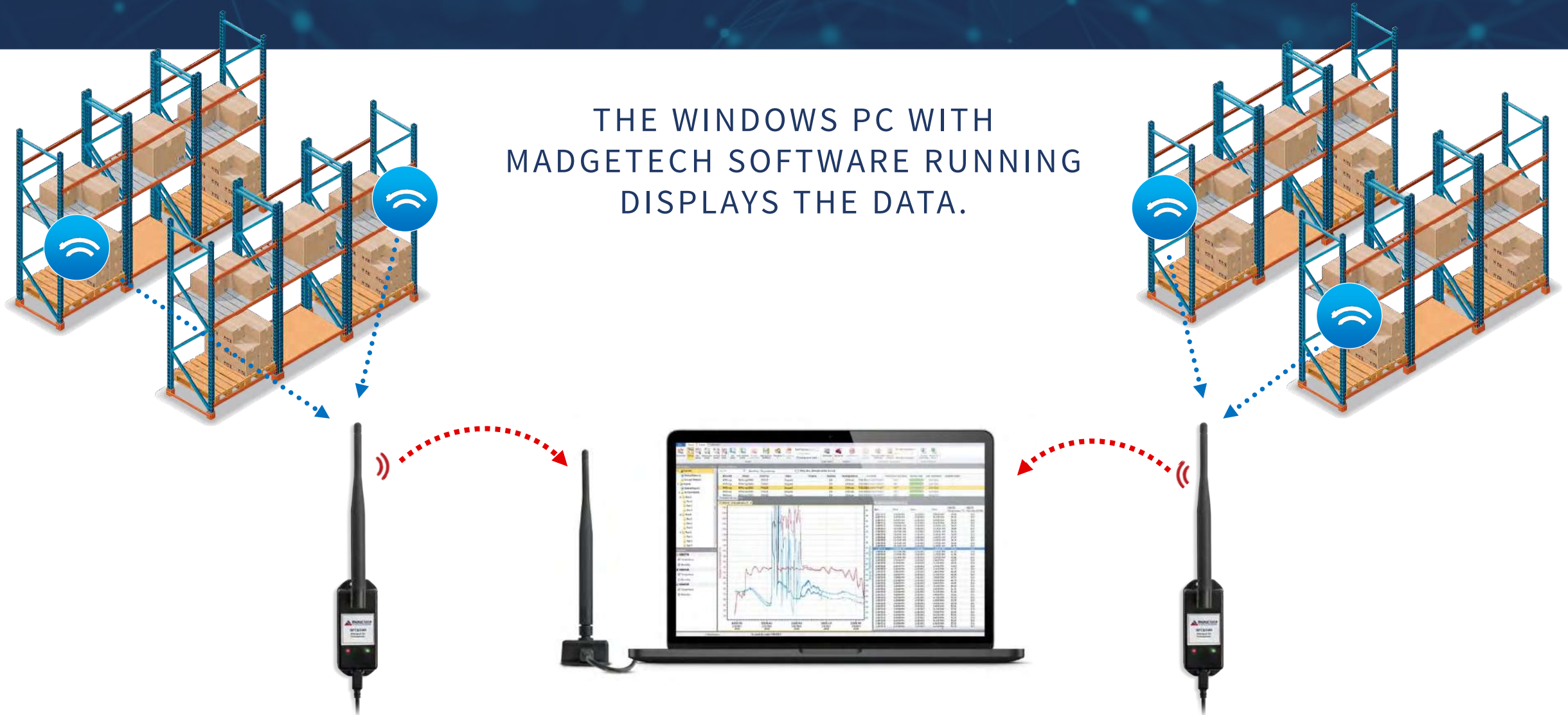


# Quick & Easy Wireless Setup



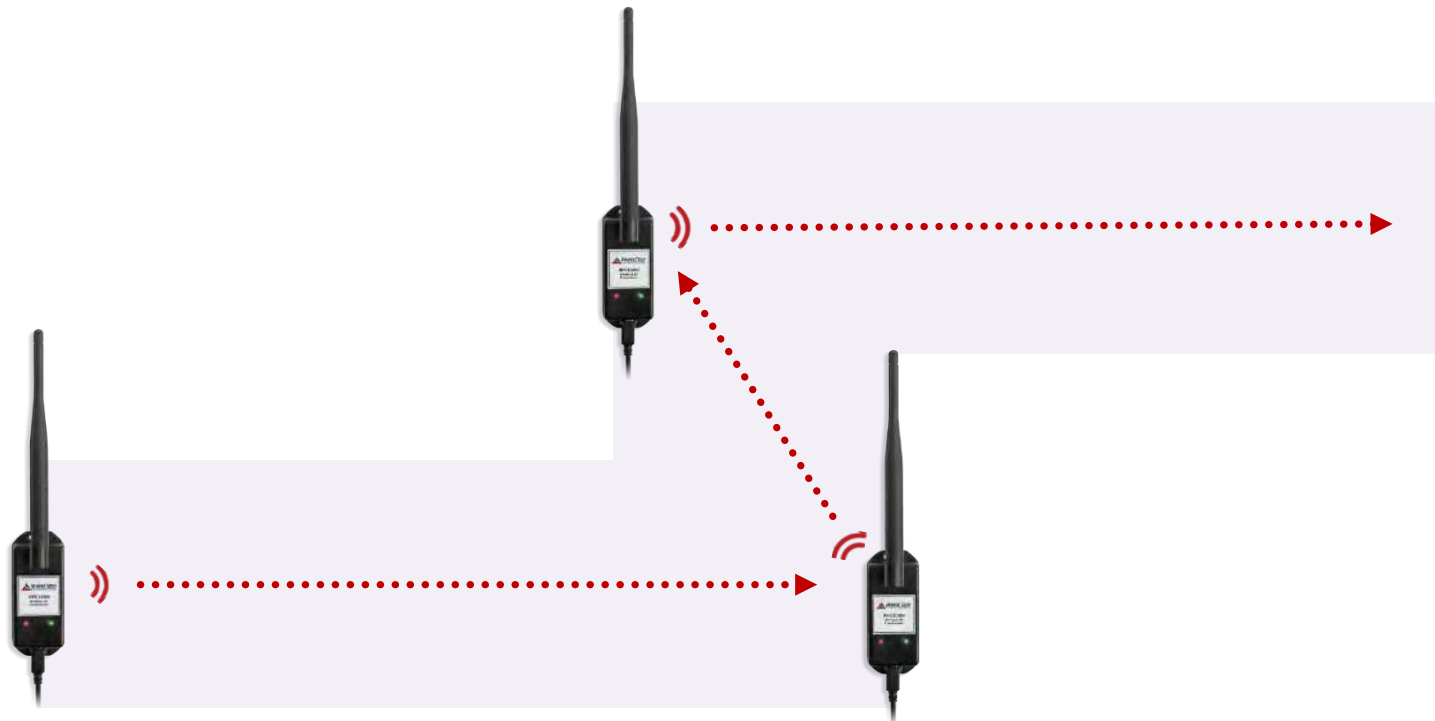


# Quick & Easy Wireless Setup



# Avoiding Wireless Interference

SIGNAL RELAYS ARE USED TO OVERCOME OBSTACLES OR OBSTRUCTIONS  
UNITS ARE SIMPLY PLUGGED INTO ELECTRICAL OUTLETS IN THE DESIRED LOCATIONS



The image is a title slide for a presentation. It features a dark blue horizontal band across the middle, which contains the title text. The background of the entire slide is white, with a faint, abstract network of glowing blue lines and dots visible on the left side, suggesting a digital or wireless theme.

# Wireless Data Loggers

# 2000A Series

## WIRELESS DATA LOGGERS

Ideal for real-time, continuous monitoring and offer configurable alarm notifications.

Data is transmitted in real-time to a central PC, or directly to the MadgeTech Cloud.

- Ambient Temperature
- Remote Temperature
- Humidity
- Pressure
- Voltage
- Pulse
- Current
- Carbon Dioxide





# 2000A Series

## WIRELESS DATA LOGGERS



**RFTemp2000A**  
Ambient Temperature  
Data Logger



**RFRHTemp2000A**  
Humidity & Temperature  
Data Logger



**RFPRHTemp2000A**  
Pressure, Humidity &  
Temperature Data Logger



**RFTCTemp2000A**  
Thermocouple  
Data Logger



**RFRTDTemp2000A**  
Precision RTD Data  
Logger



**RFVolt2000A**  
Voltage Data Logger



**RFPulse2000A**  
Pulse Data Logger



**RFCurrent2000A**  
DC Current Data Logger



**RFCO2RHTemp2000A**  
CO<sub>2</sub>, Humidity &  
Temperature Data Logger



**VTMS**  
Vaccine Temperature  
Monitoring System

# 2000A Series Features

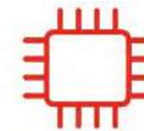
## WIRELESS DATA LOGGERS



View Data in  
Real-Time



Wireless  
Communication



32,256  
Readings



Audible & LED  
Alarm Indicators



External Power  
Supply



LCD  
Screen



Text & Email Alarm  
Notifications



### Wireless Meat Temperature Data Logger

- Complete Meat Process Monitoring (Cooking, Cooling & Storage)
- Equipped with a Rugged Piercing Probe
- Operating Environment: -20 °C to +100 °C (-4 °F to 212 °F)
- Splash-Proof (IP67)



# Wireless Transceivers



# RFC1000

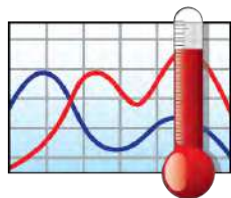
## WIRELESS TRANSCEIVERS

### Wireless Transceiver

- Long transmission range, for better performance in occluded environments such as ovens & refrigerators.
- External antenna allows flexibility with mounting positions in both orientation & proximity to obstructions.
- CE Approved
- Splash-Proof

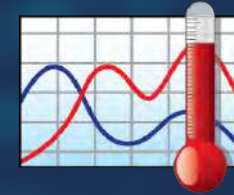


# MadgeTech Software



# Data Logger Software

MADGETECH 4 SOFTWARE

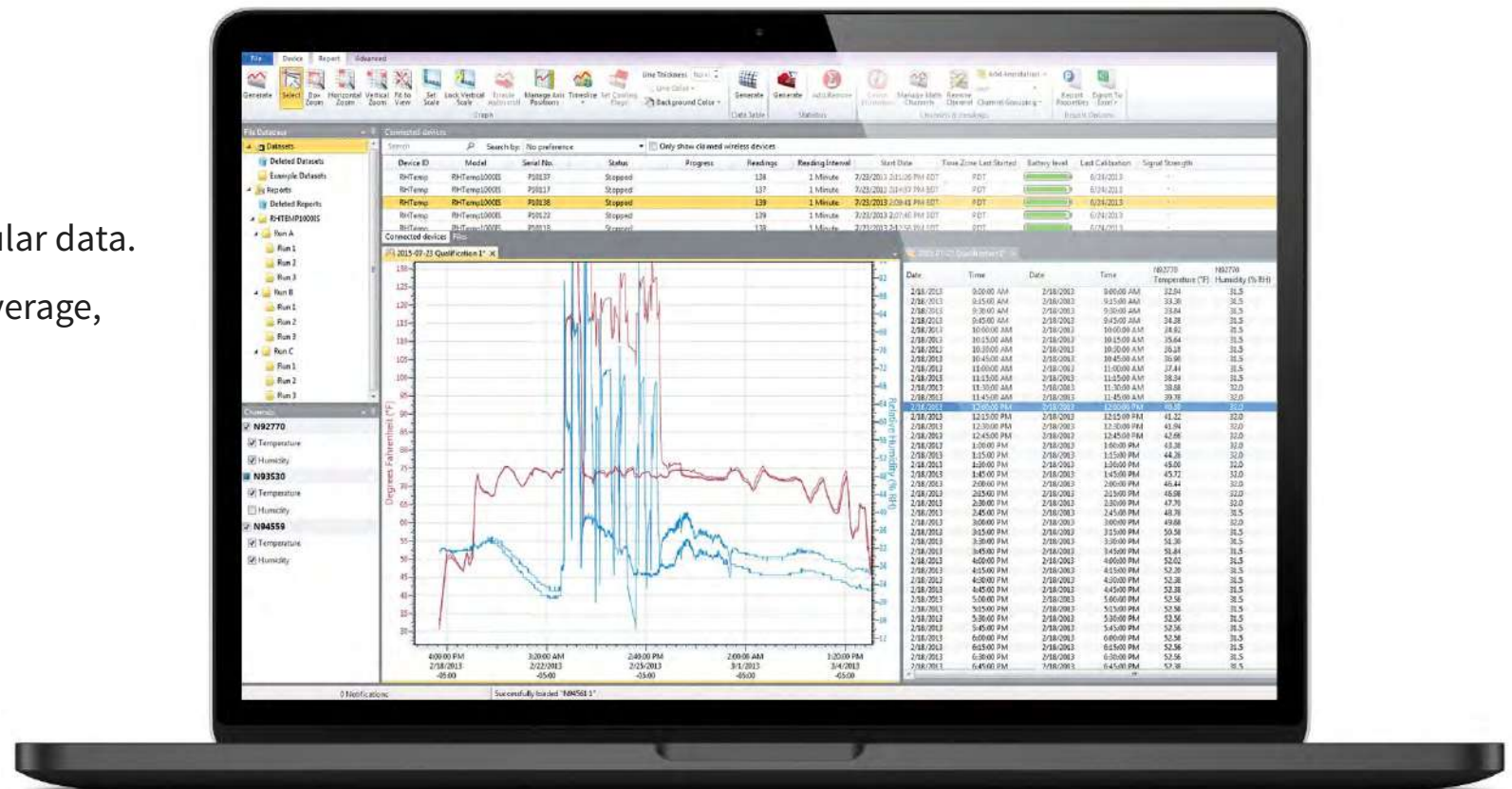


## Powerful Data Analysis

- Customizable Reports
  - Graph, Tabular Data & Reports
- Annotate data points on the graph or tabular data.
- Statistics include minimum, maximum, average, time above temperature & more.

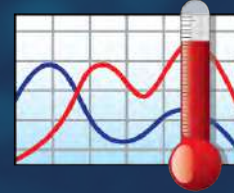
## User Friendly

- Immediate device status information
- Digital calibration
- Automatic data saving
- Export to Excel

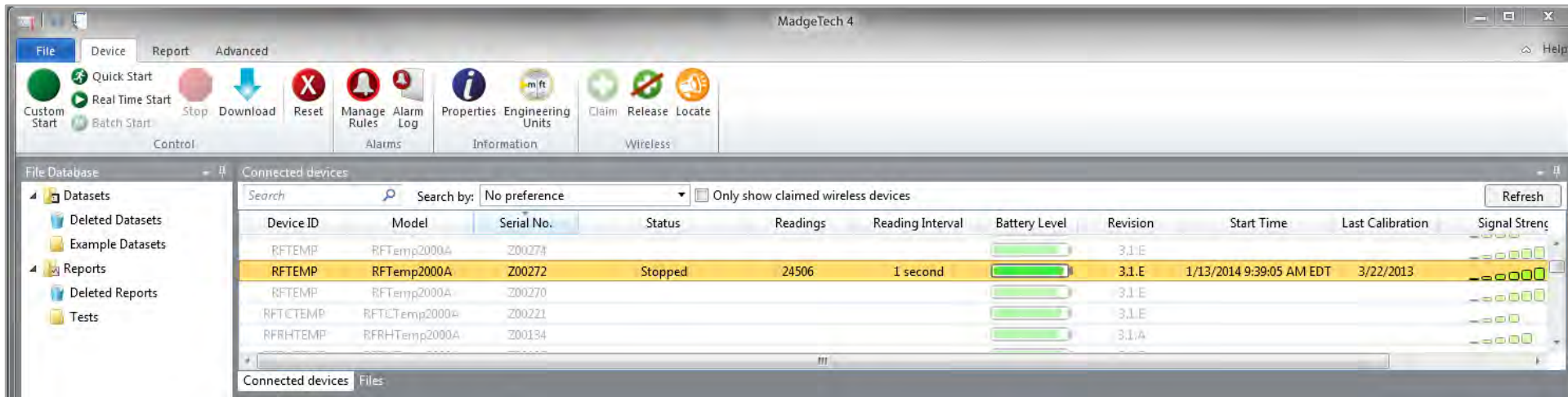


# Getting Started

## MADGETECH 4 SOFTWARE



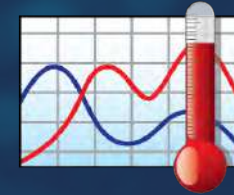
- All wireless loggers within range will be identified and displayed in the **Connected Devices** panel.
- Device information is displayed including **Device ID**, **Serial Number**, **Last Calibration Date** and **Battery Level**.
- Multiple devices can be connected, configured and operated simultaneously.





# Communication

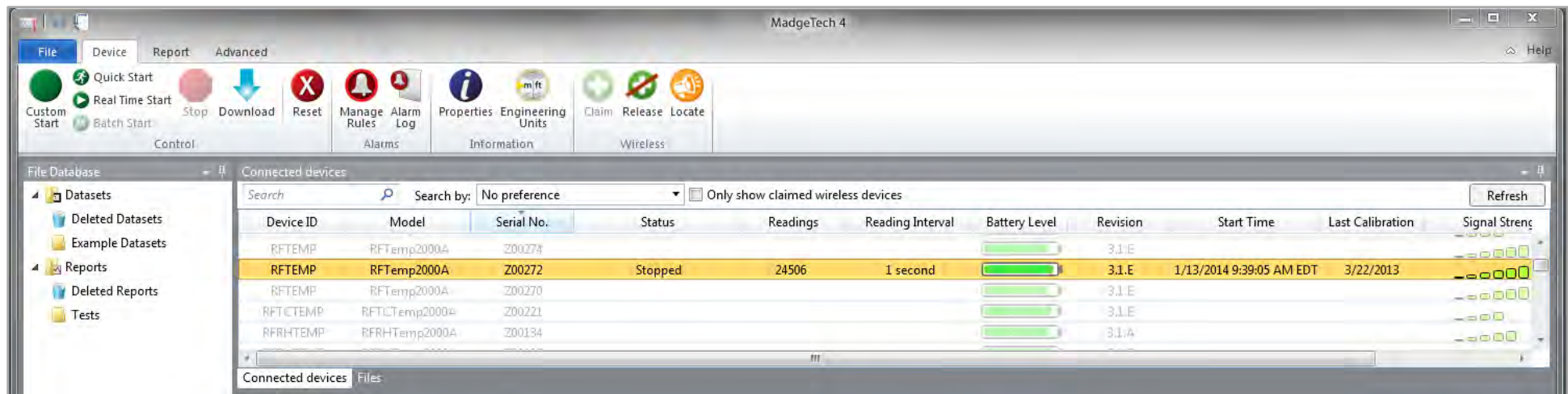
MADGETECH 4 SOFTWARE



- To communicate and configure a wireless data logger, highlight the device within the **Connected Devices** panel and then click the **Claim** icon.
- Once a data logger is claimed, additional device information and configuration options are available.

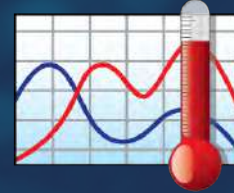


Claim

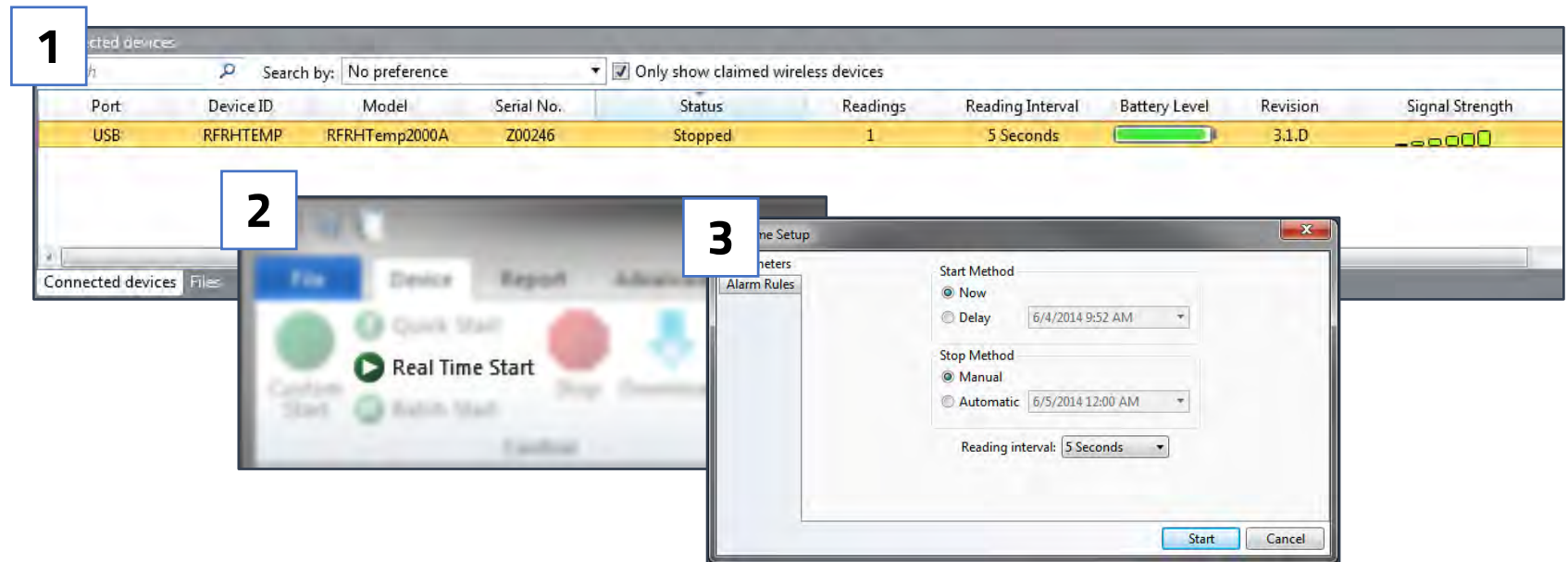


# Start in Real-Time

MADGETECH 4 SOFTWARE

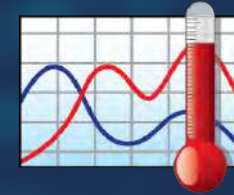


1. Select the device within the **Connected Devices** panel.
2. Select **Real-Time Start** from the Control tab in the top menu bar.
3. Choose your parameters for reading rate, immediate or delay start.



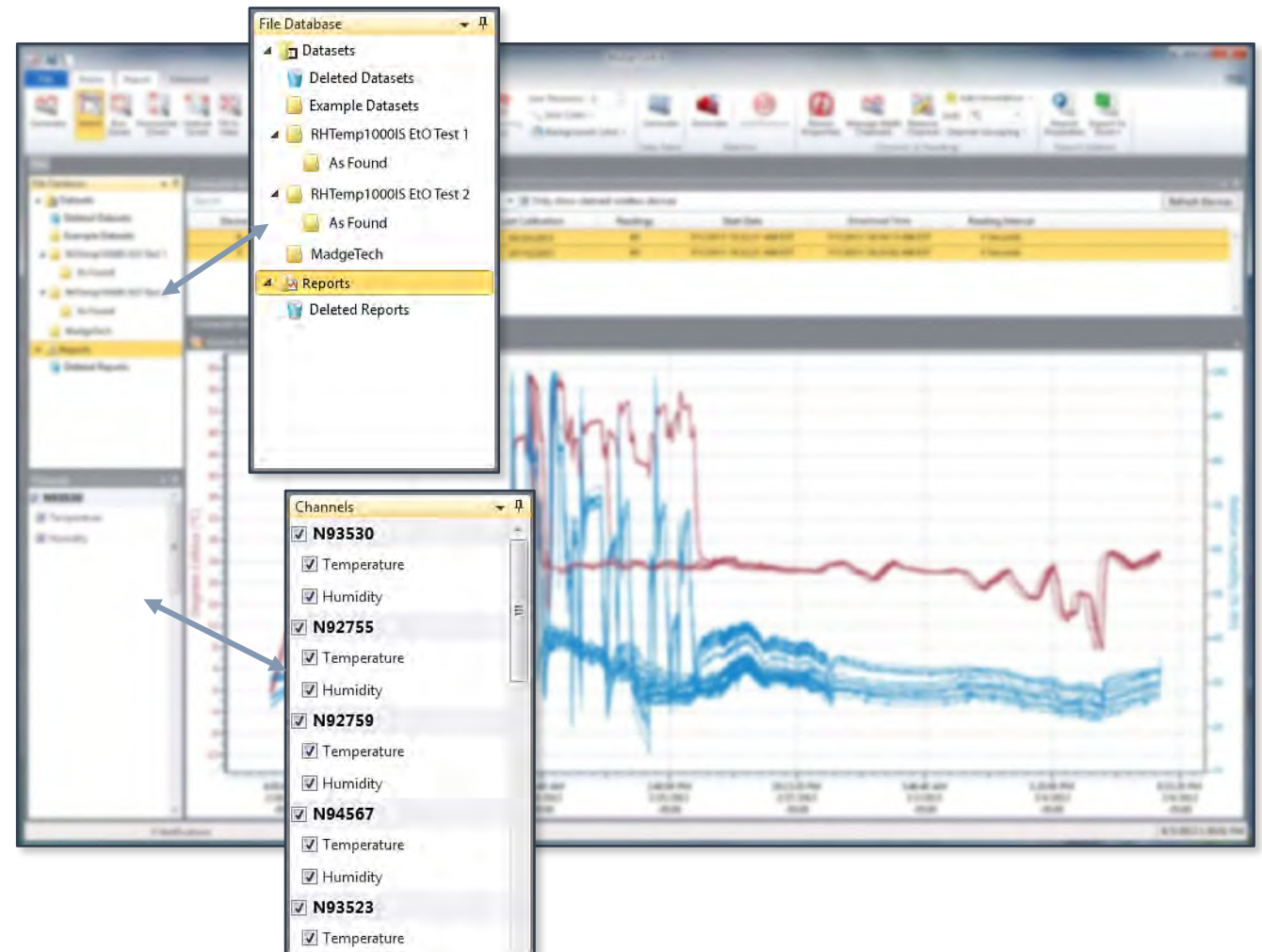
# Data Analysis

MADGETECH 4 SOFTWARE



## Data Handling & File Database

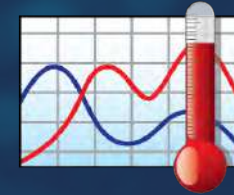
- As data is transmitted, it is saved to the built-in file database.
- Downloaded data is saved in the Datasets folder.
- When in Real-Time mode, a graph can automatically be generated and displayed.
- Customized graphs and compiled data can be saved to the Reports Folder.
- The look and feel is comparable to standard office software to aid in user friendliness and ease of use.



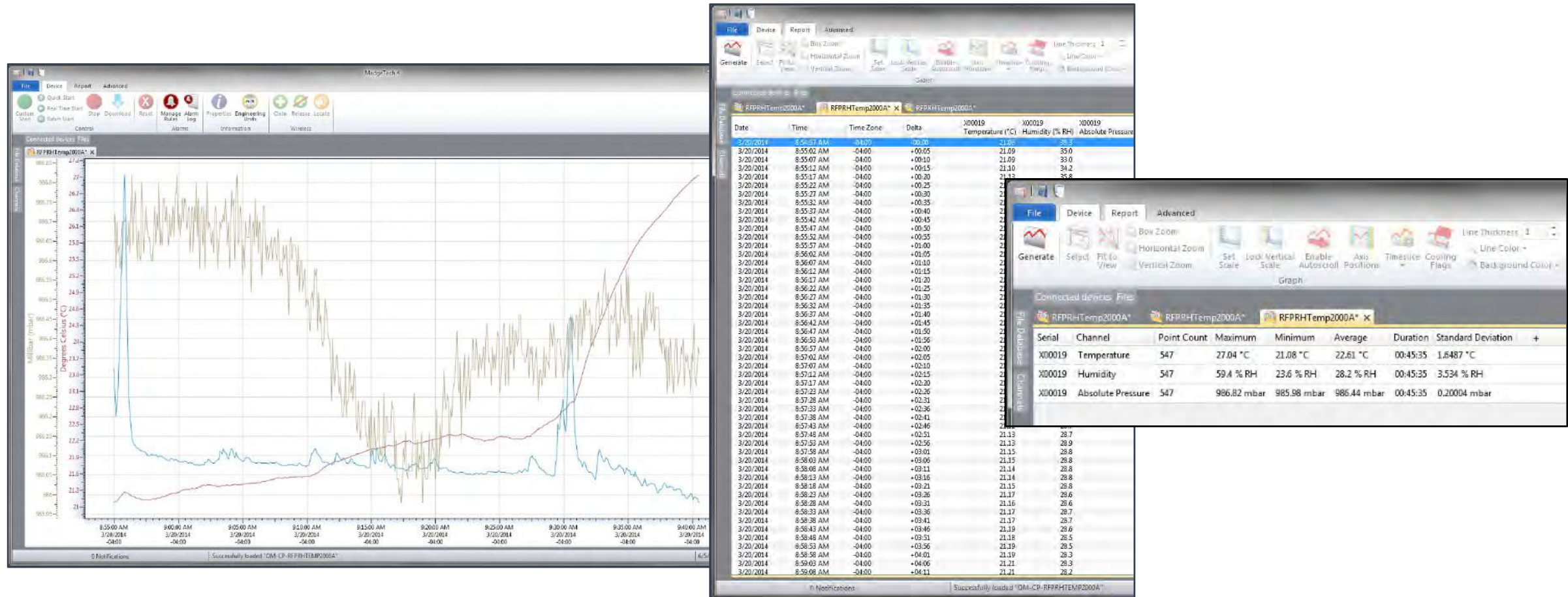


# Data Analysis

MADGETECH 4 SOFTWARE



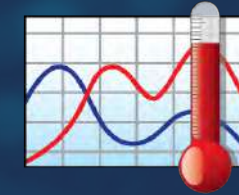
## Graphs, Statistics & Tabular Data





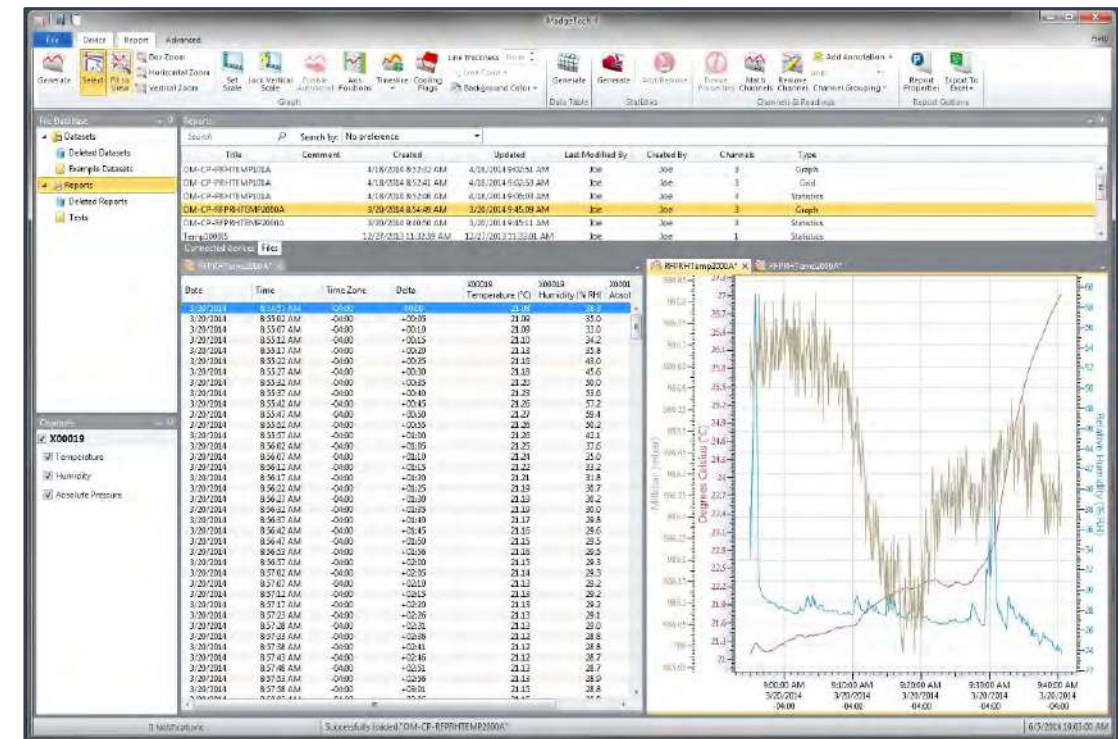
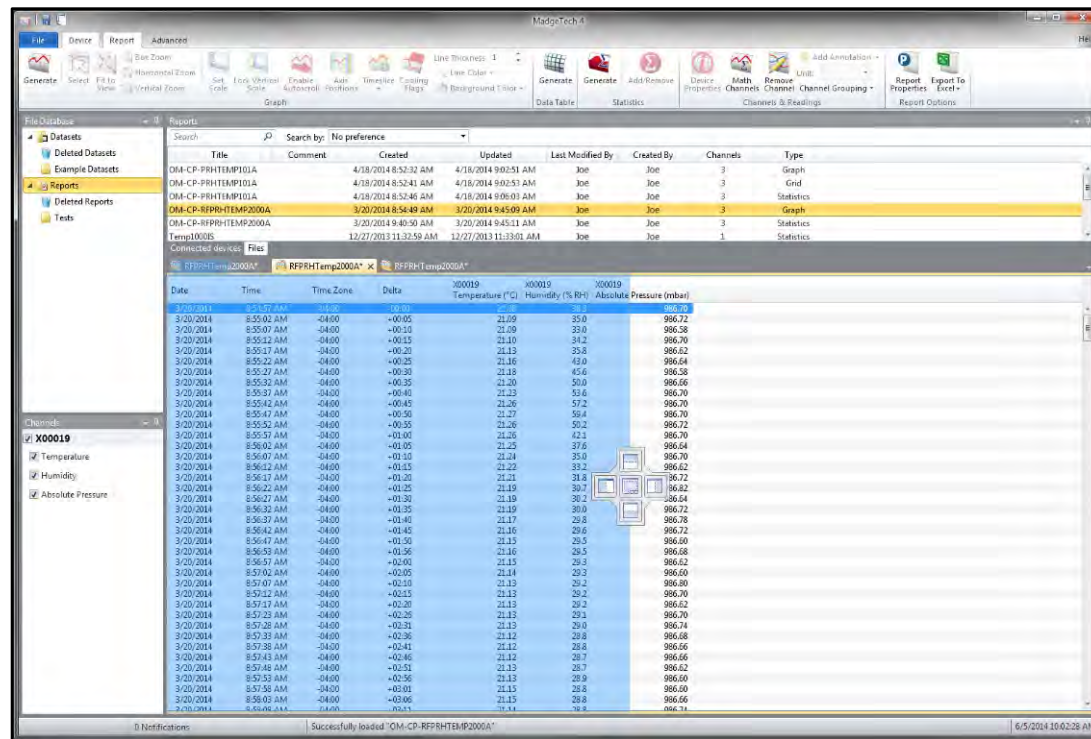
# Data Analysis

MADGETECH 4 SOFTWARE



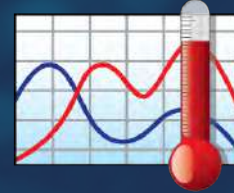
## Customizable Interface

To increase efficiency, the MadgeTech software allows users to customize the layout of the screen multiple ways to better suit their needs.



# Export to Excel

MADGETECH 4 SOFTWARE



## Export With the Click of a Button

MadgeTech Software makes data review easy with the ability to export to Microsoft Excel.



Device Information			
1	Device Name:	RFPRHTemp2000A	
2	Device Description:	Wireless Pressure, Temperature and Humidity Recorder	
3	Serial Number:	X00019	
4	Device ID:	RFPRHTEMP	
5			
6			
		Channel 1	Channel 2
		Temperature (°C)	Humidity (% RH)
14	8:54:57 AM	21.08	38.3
15	8:55:02 AM	21.09	35
16	8:55:07 AM	21.09	33
17	8:55:12 AM	21.1	34.2
18	8:55:17 AM	21.13	35.8
19	8:55:22 AM	21.16	43
20	8:55:27 AM	21.18	45.6
21	8:55:32 AM	21.2	50
22	8:55:37 AM	21.23	53.6
23	8:55:42 AM	21.26	57.2
24	8:55:47 AM	21.27	59.4
25	3/20/2014 8:55:52 AM	21.26	50.2
26	3/20/2014 8:55:57 AM	21.26	42.1
27	3/20/2014 8:56:02 AM	21.25	37.6
28	3/20/2014 8:56:07 AM	21.24	35
29	3/20/2014 8:56:12 AM	21.22	33.2
30	3/20/2014 8:56:17 AM	21.21	31.8



# Secure Software

MADGETECH 4 SECURE SOFTWARE



## Aiding in 21 CFR Part 11 Compliance

MadgeTech 4 Secure Software aids customers in compliance with 21 CFR Part 11 requirements. The software ensures standards in which electronic files are considered equivalent to paper records, saving time and effort.

- MadgeTech 4 Secure Software Package
- IQ/OQ/PQ Protocols
- Software Validation Workbook



# Secure Software

MADGETECH 4 SECURE SOFTWARE

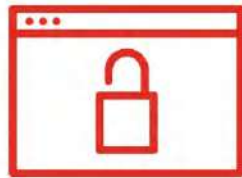


## Aids in Compliance with FDA 21 CFR Part 11/820 and GxP Guidelines

Additional security benefits such as:



Audit Trails



Secure Data Files



Administrative Privileges



Electronic Signatures



# MadgeTech Cloud Services



# Features

MADGETECH CLOUD SERVICES

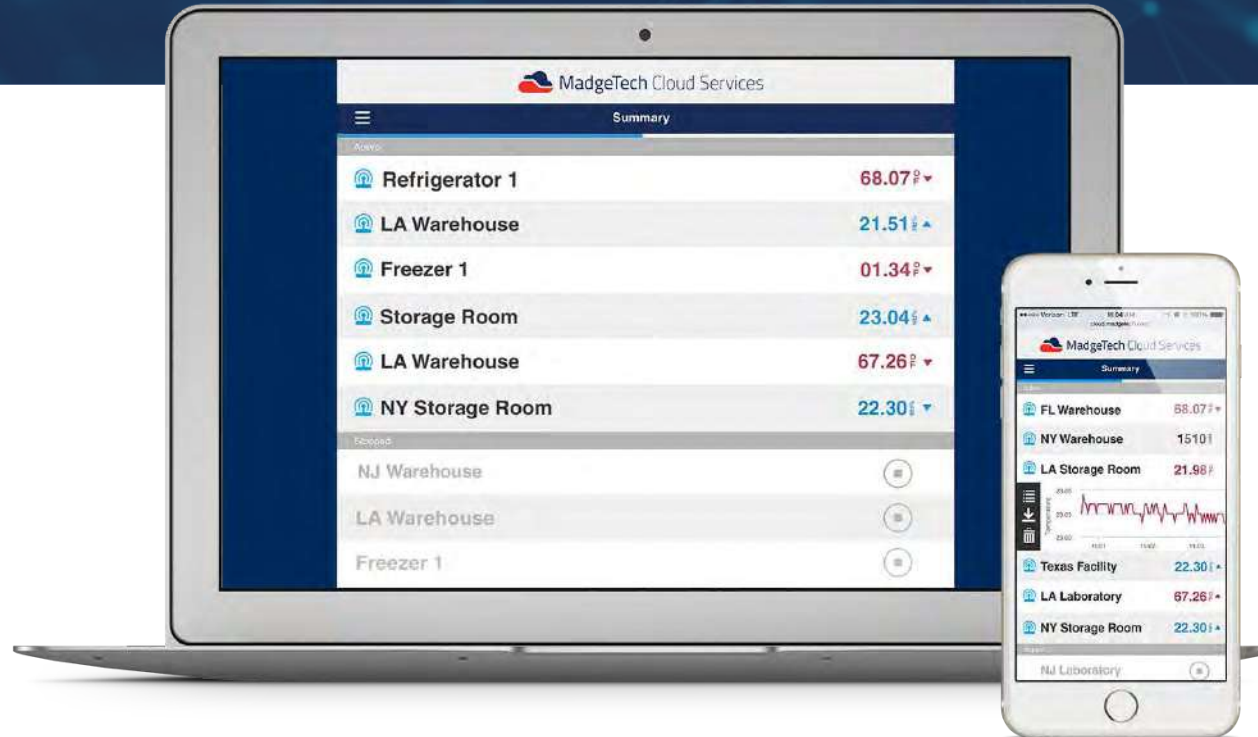


With MadgeTech Cloud Services, a wireless data logger system can securely transmit data in real-time to be viewed on any internet or data enabled device such as a computer, tablet or mobile device.



# Features

MADGETECH CLOUD SERVICES



View Data in  
Real-Time



Access Data  
Instantly



Secure  
Solution



Email & Text  
Notifications



Quick & Easy  
Setup

# RFC1000 Cloud Relay

MADGETECH CLOUD SERVICES



## Wireless Data Logging Hub

- Transmits data directly to the cloud, eliminating the need for a Central PC.
- Real-time data can be viewed from any internet enabled device.



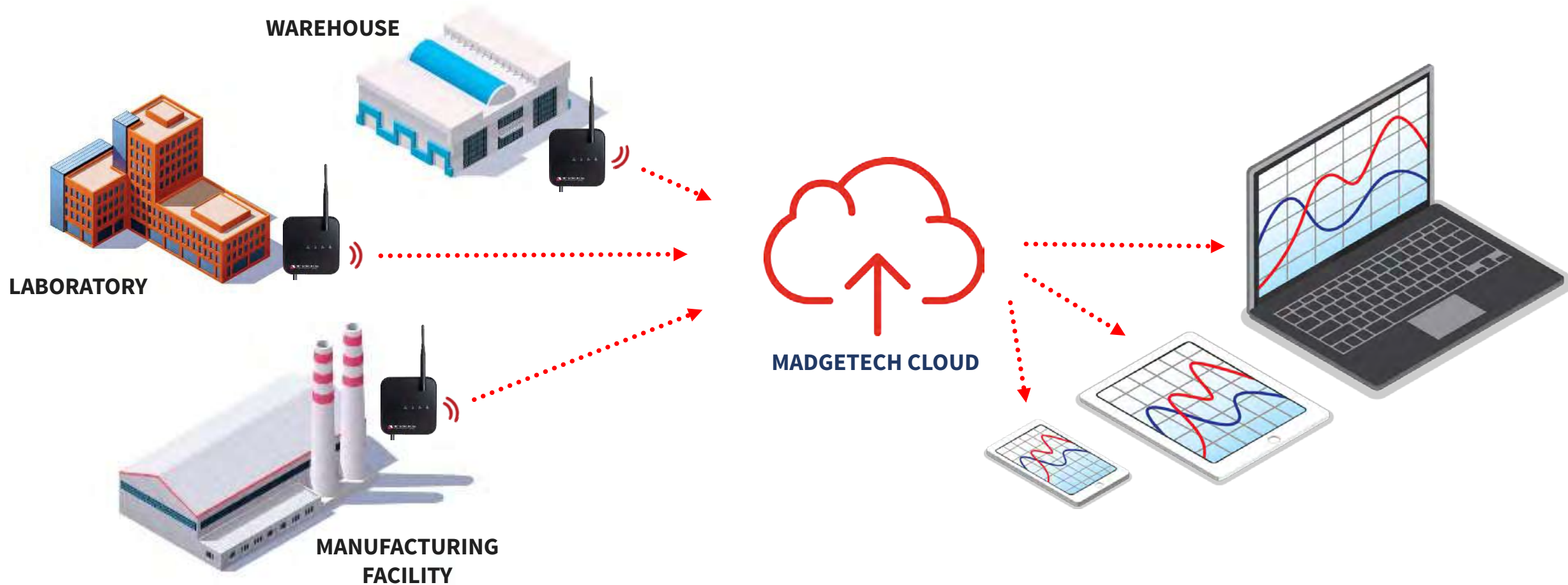
# RFC1000 Cloud Relay

MADGETECH CLOUD SERVICES



# RFC1000 Cloud Relay

MADGETECH CLOUD SERVICES



# MadgeTech Customer Support

